

—'68

SOCIALIST CAMPAIGN

The 1968 Socialist Workers Party election campaign is the biggest socialist campaign in over 30 years. Its candidates, Fred Halstead for President and Paul Boutelle for Vice President, have already spoken to over 100,000 people. Through newspapers, radio and TV they have reached millions more.

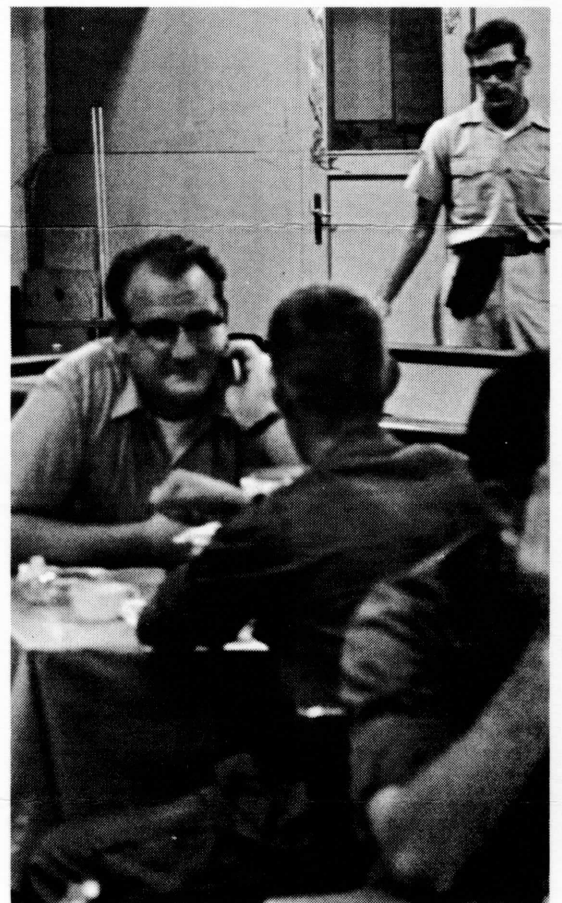


Paul Boutelle speaks in Hyde Park, London, June, 1968.

Young socialist campaign supporters at over 400 colleges, high schools, and military bases have distributed more than a million and a half pieces of campaign literature.

The Halstead-Boutelle ticket will be on the ballot in 21 states. Active write-in campaigns will be conducted in the remaining states.

The candidates have taken the socialist campaign from Baton Rouge to Berkeley, from Sioux Falls to Seattle. Paul Boutelle spoke to striking Columbia students, to the black victims of racism in England, and to revolutionary students in France. Fred Halstead addressed 30,000 at the April 27th antiwar demonstration in San Francisco and is now completing a world tour that took him to antiwar conferences in Japan and to GIs at Long Binh Army Base in Vietnam.



Fred Halstead talks with GIs at USO in Saigon August, 1968.

Halstead and Boutelle are campaigning for the withdrawal of U. S. troops and missiles from Vietnam and all other foreign bases. They totally support the black liberation movement and the right of Afro-Americans and other national minorities to control their own communities. They point out that the evils of war, racism, poverty, the erosion of labor's rights and civil liberties are rooted in the capitalist system. They stand for a complete break with all forms of capitalist politics. They advocate the formation of an independent black party and an independent labor party and support all steps that lead toward their development.

Support the 1968 socialist campaign!

Clip and mail

FUNDS ARE BADLY NEEDED for the final stretch of the campaign! At least \$10,000 must be raised before the November elections. You can help now with your contribution and support.

Enclosed is . . . \$100, . . . \$50, . . . \$25, . . . \$10, . . . \$5.

Although I do not necessarily agree with all the planks of the Socialist Workers Party platform, I endorse the SWP's 1968 presidential ticket, as a positive alternative to the Democratic and Republican parties.

Socialist Workers National Campaign Committee
873 Broadway
New York, N. Y., 10003
Tel. (212) 673-0790

Name
Address
City State Zip
School